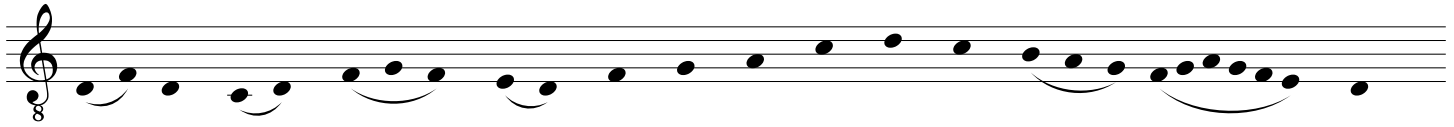
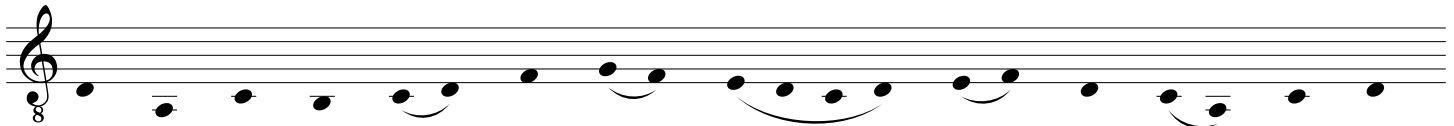


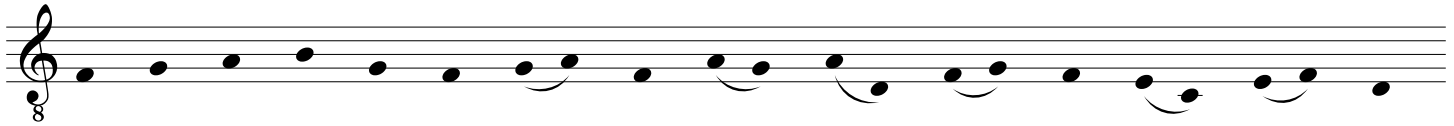
# Naturalis concordia vocum cum planetis



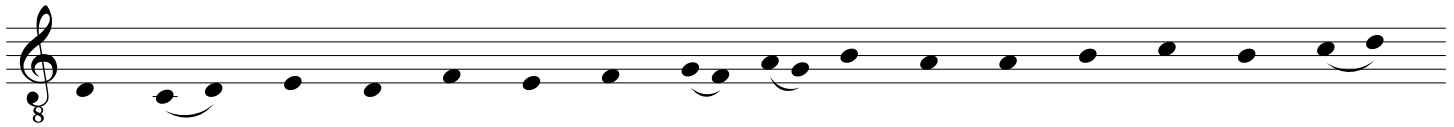
Est pla - ne - ta - rum si - mi - lis con - cor - di - a \_\_\_\_\_ vo - cum



A ter - ra cae - lo \_\_\_\_\_ di - vi - nus \_\_\_\_\_ scan - di - tur \_\_\_\_\_ or - do.



Tul - li - us hos nu - me - ris \_\_\_\_\_ sic sur - sum scan - dit ab \_\_\_\_\_ i - mis:



Lu - na, \_\_\_\_\_ Er - mes, Ve - nus et Sol, Mars, Io - vis, at - que Sa - tur - nus.

Translation:

The order of the planets from earth to heaven

Is similar to the harmony of pitches.

Tullius traced them from the lowest numbers in ascending order thus:

Moon, Hermes, Venus, Sun, Mars, Jupiter and Saturn.